

**FOR  
SALE**



# **2022 Murchison**

*El Paso, Texas 79902*

Roland Correa  
Commercial Broker  
(915) 328-9992

[roland@rcproperties-elp.com](mailto:roland@rcproperties-elp.com)  
[www.rcproperties-elp.com](http://www.rcproperties-elp.com)

# CALL FOR PRICING

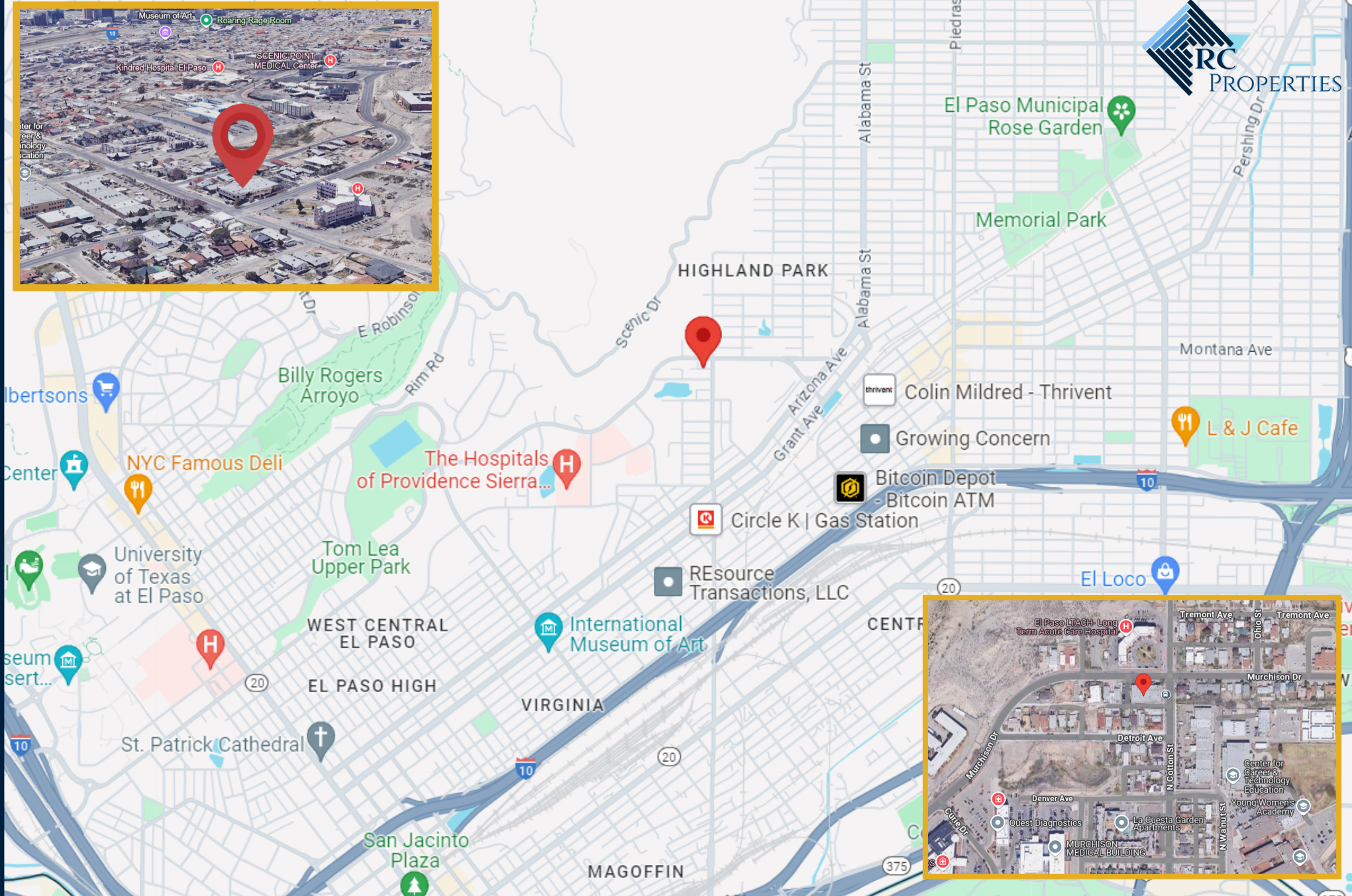
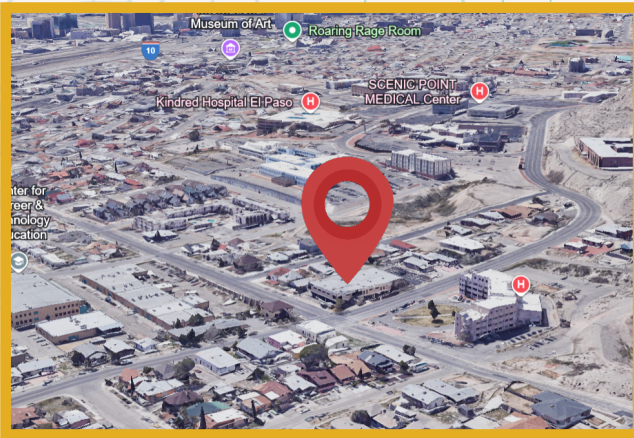
## PROPERTY HIGHLIGHTS

- Building Size: 14,285 sf
- Lot Size: 27,000 sf
- Total Parking Spaces: 69
  - Covered: 38

---

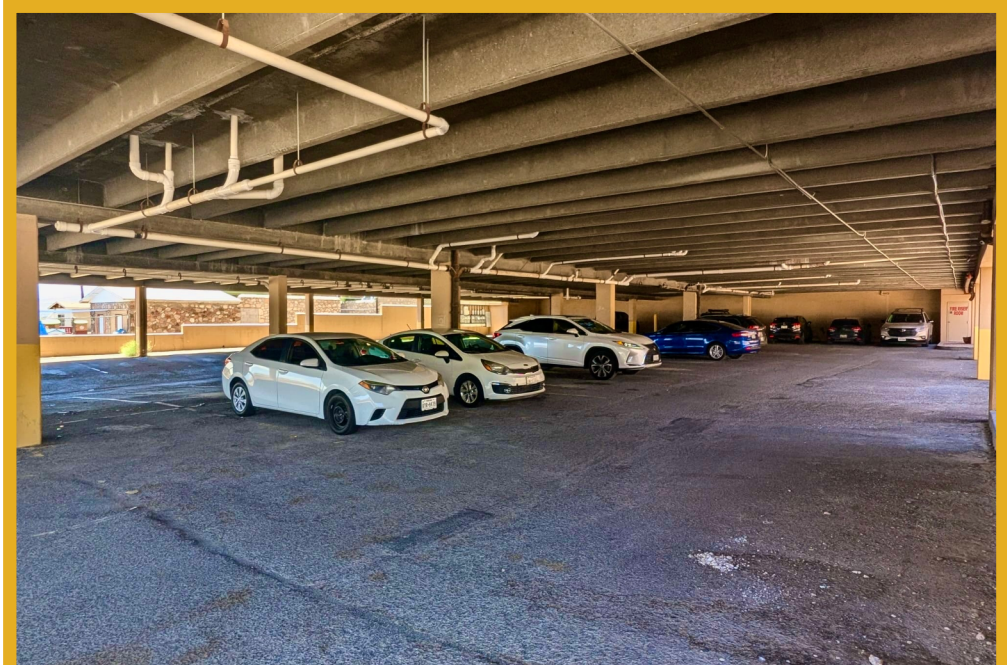
Medical/Professional office in the heart of Central El Paso on Murchison next to the Hospitals of Providence Sierra Campus with easy access to I-10. Spaces are move in ready and the property has underground covered parking. Perfect for a doctor, dentist, or professional office space.





2022 Murchison El Paso, TX 79902

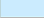


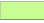
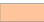


Roland Correa  
 Commercial Broker  
 (915) 328-9992  
 roland@rcproperties-elp.com  
 www.rcproperties-elp.com

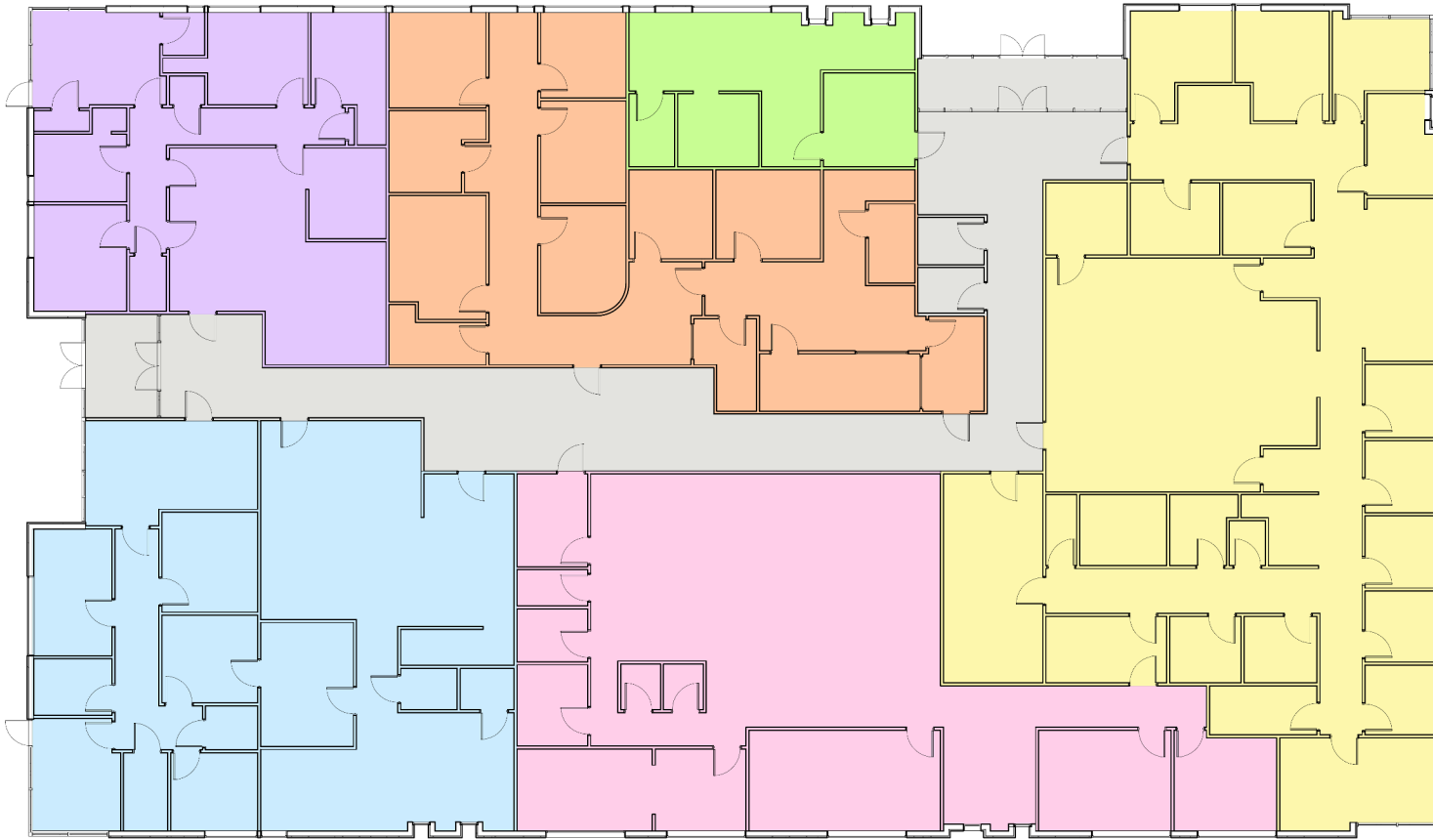


*2022 Murchison, El Paso, TX 79902*

Roland Correa  
Commercial Broker  
(915) 328-9992  
[roland@rcproperties-elp.com](mailto:roland@rcproperties-elp.com)  
[www.rcproperties-elp.com](http://www.rcproperties-elp.com)

**LEGEND**

	SUITE A 2,400 SF
	SUITE B 2,520 SF
	SUITE C 3,807 SF
	SUITE D 575 SF
	SUITE E 2,113 SF
	SUITE F 1,457 SF
	CIRCULATION/SUPPORT SPACES 1,586 SF
<b>TOTAL SF: 14,458</b>	



**01** 2022 MURCHISON DR. - EXISTING FLOOR PLAN



*2022 Murchison, El Paso, TX 79902*

Roland Correa  
Commercial Broker  
(915) 328-9992  
roland@rcproperties-elp.com  
www.rcproperties-elp.com