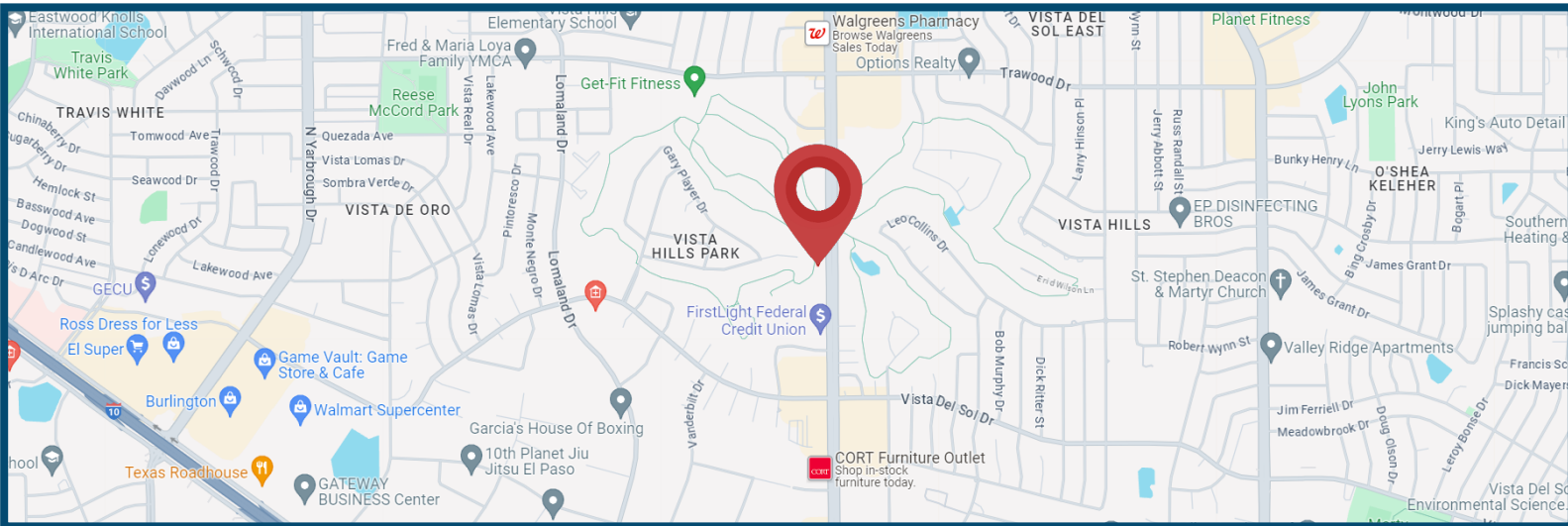


# 1635 Lee Trevino

El Paso, TX 79936



**FOR LEASE**



## LEASE RATE: \$18/SF NNN

## Highlights

Medical/Professional office in the heart of East El Paso on Lee Trevino in between Trawood and Vista del Sol. Two suites are still available, 4,091 sf in total, or can be taken individually. The entire complex is currently undergoing a full renovation and more pictures to come when complete. Perfect for a doctor, dentist, or professional office space.

- Available Space: 1,166-4,091 sf
    - **Suite B:** 1,166 sf - \$1,749/Mo, NNN
      - Kitchen
      - 5 Offices
      - Reception Area
    - **Suite C:** 2,925 sf - \$4,387.50/Mo. NNN
      - 10 Offices
      - Large Atrium
      - Large Reception/Front Desk Area
- RC Properties · [www.rcproperties-elp.com](http://www.rcproperties-elp.com)

Roland Correa  
Commercial Broker  
(915) 328-9992  
[roland@rcproperties-elp.com](mailto:roland@rcproperties-elp.com)  
[www.rcproperties-elp.com](http://www.rcproperties-elp.com)

# 1635 LEE TREVINO



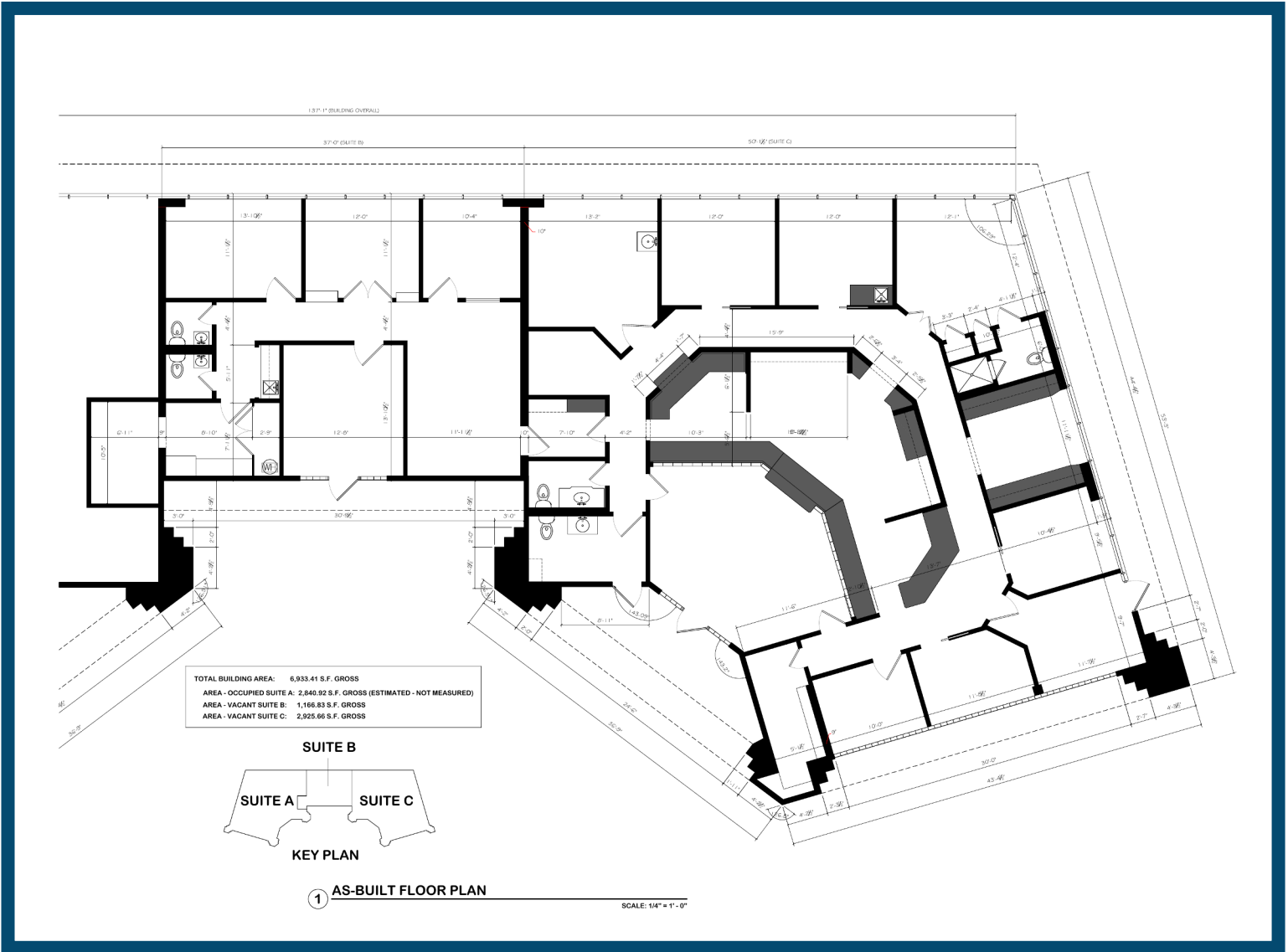
*FOR LEASE*



Roland Correa  
Commercial Broker  
(915) 328-9992  
roland@rcproperties-elp.com  
www.rcproperties-elp.com

FOR LEASE

## Suite B & C Layout



Roland Correa  
Commercial Broker  
(915) 328-9992  
roland@rcproperties-elp.com  
www.rcproperties-elp.com