

**FOR
LEASE**



1635 Lee Trevino

El Paso, Texas 79936

Roland A. Correa
(915) 630-8129

rac.rcproperties@gmail.com
www.rcproperties-elp.com

Lease Rate: \$19/SF NNN

PROPERTY HIGHLIGHTS

- | | |
|------------------|---------------------------------------|
| · Suite B | · Suite C |
| - 1,166 SF | - 2,925 SF |
| - 4 Offices | - 10 Offices |
| - Kitchen | - Large Atrium |
| - Reception Area | - Large Reception/
Front Desk Area |

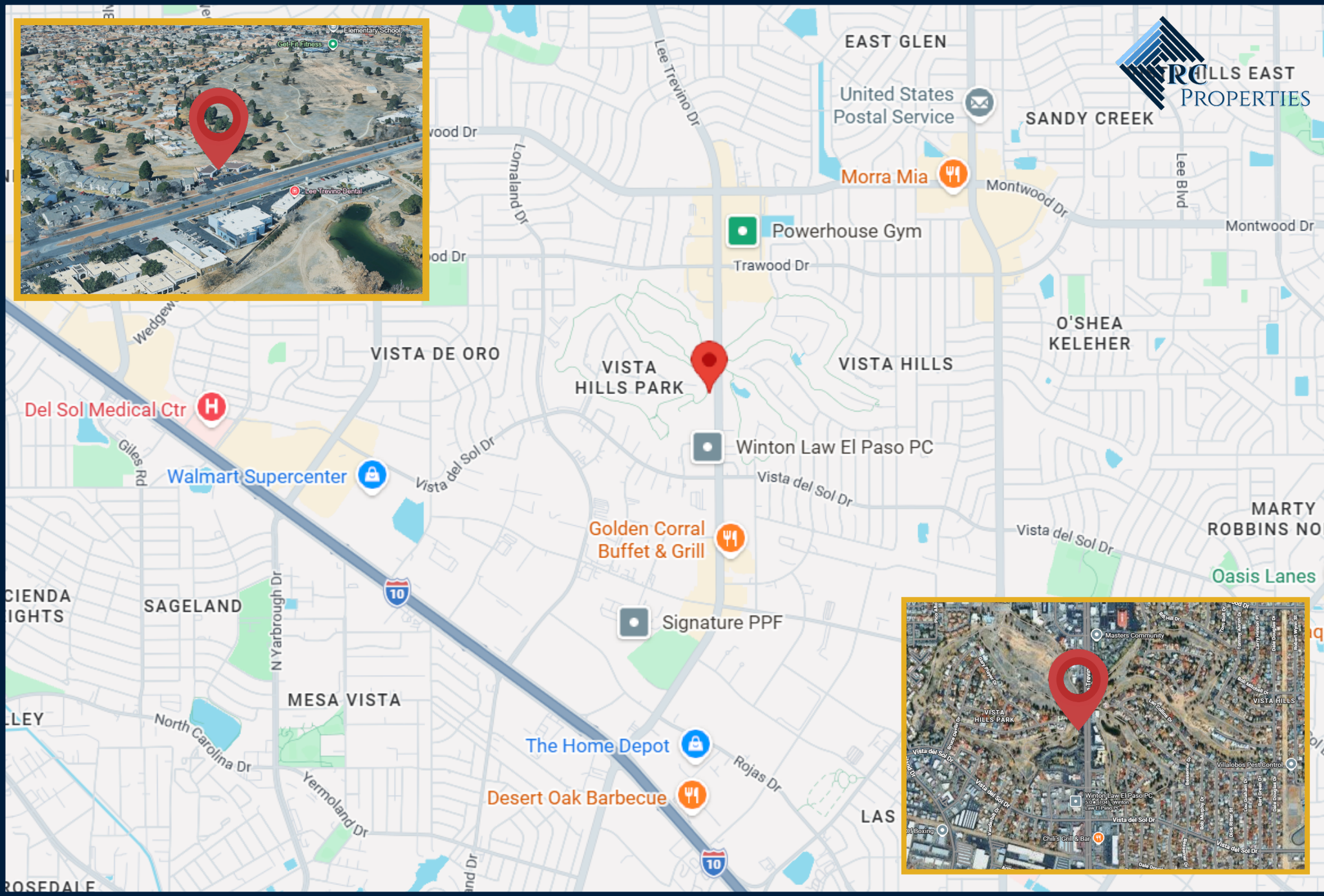
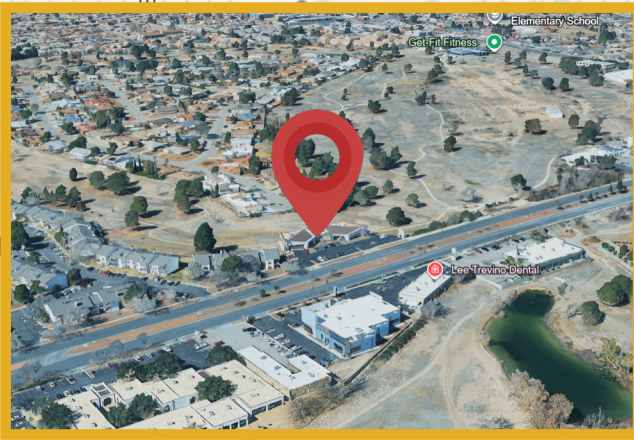
Suites can be combined for a total of 4,092 SF

Two medical/professional office suites, ideally situated in the heart of East El Paso between Trawood and Vista del Sol. Recently renovated throughout, this complex offers flexible options — lease one suite or combine both for a larger footprint. Perfect for a physician, dentist, specialist, or professional services firm seeking a well-located, move-in ready space.



Roland A. Correa
(915) 630-8129

rac.rcproperties@gmail.com
www.rcproperties-elp.com



1635 Lee Trevino, El Paso, TX 79936

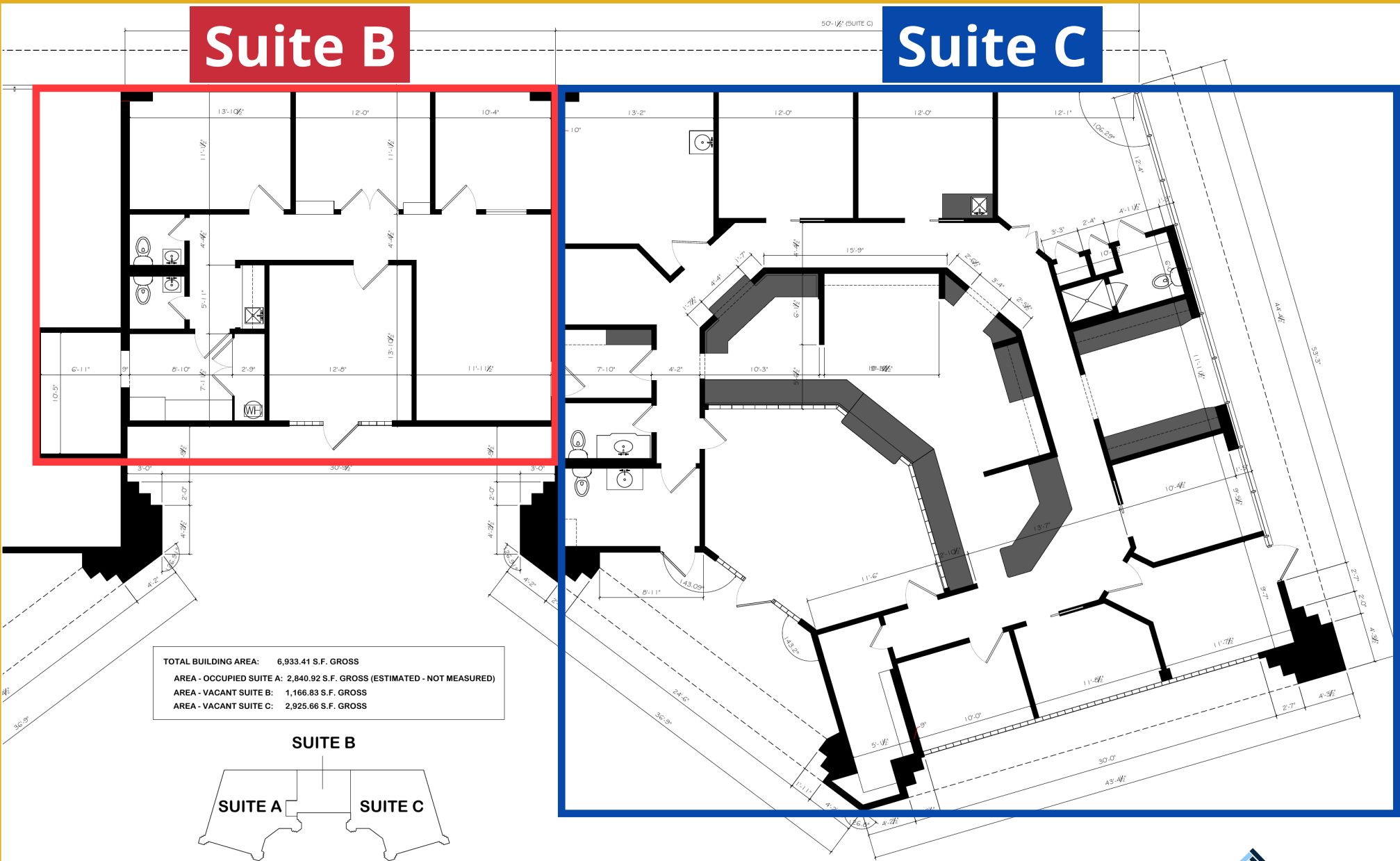


1635 Lee Trevino, El Paso, TX 79936

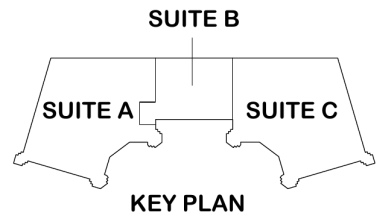
Roland A. Correa
(915) 630-8129
rac.rcproperties@gmail.com
www.rcproperties-elp.com

Suite B

Suite C



TOTAL BUILDING AREA: 6,933.41 S.F. GROSS
AREA - OCCUPIED SUITE A: 2,840.92 S.F. GROSS (ESTIMATED - NOT MEASURED)
AREA - VACANT SUITE B: 1,166.83 S.F. GROSS
AREA - VACANT SUITE C: 2,925.66 S.F. GROSS



1 AS-BUILT FLOOR PLAN

SCALE: 1/4" = 1' - 0"



1635 Lee Trevino, El Paso, TX 79936

Roland A. Correa
(915) 630-8129
rac.rcproperties@gmail.com
www.rcproperties-elp.com